

Customized Elevator Solutions

SYMPHONY MRL
SYMPHONY SMR
SYMPHONY MOD



ADVANCED TECHNOLOGY

We are constantly working on further developments of our systems as well as on new developments of components to be able to provide state-of-the-art technology and tailor-made solutions to our customers.



KÖHLER ELEVATOR GmbH is a dynamic, fast-growing and innovative elevator company with worldwide business connections. The consequent and quick implementation of individual customer wishes makes us successful.

Our business address is in Germany in Pfullingen. At this location administration, sales, development and project management are operating. Engineers with many years of experience in the elevator industry are working in our team.

Our own development competence makes us independent of usual market solutions. Our own innovative technology combined with lean organizational structures as well as flexibility enables us to offer high quality and customized solutions to an excellent price performance ratio.



Our goal is to convey a sense of added value to our customers, which is connected to each of our products and services. The passion and the attention to detail as well as the use of leading technologies for our products and processes help us to achieve this goal.

Regardless of price, we maintain a high standard of quality through the entire product range.

A dynamic growing environment demands for continuous improvements and adaptations of products and processes of each company. In order to achieve this sustainably in the future and to keep our quality standards, KÖHLER Elevator GmbH has introduced a quality management system according to EN ISO 9001.





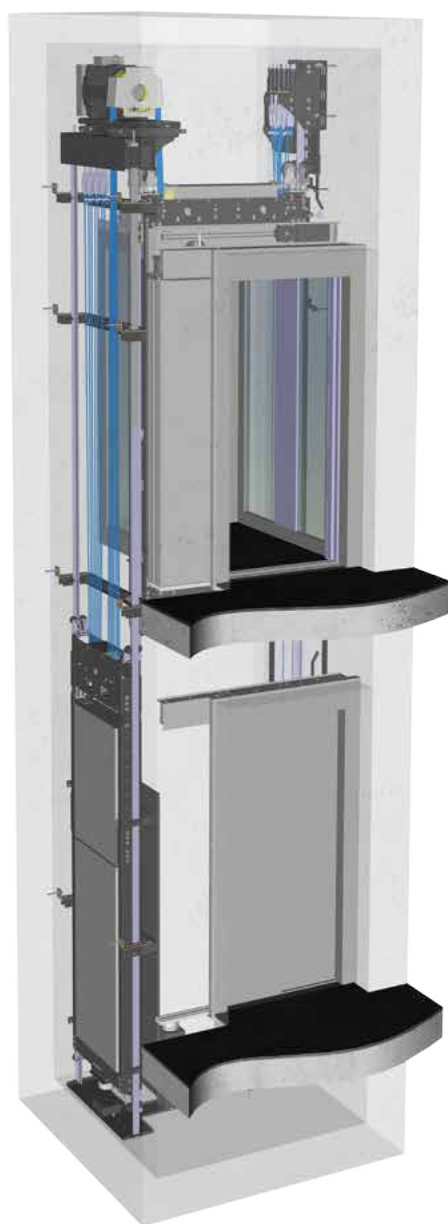


CONTENT SYMPHONY

Overview	8-9
Advantages	11
Doors	12-13
Operating and indicating panels	14-17
Cabins	19-25
Control system	27-31
Layout	32-38

SYMPHONY **OVERVIEW**

SYMPHONY **MRL**
WITHOUT MACHINE ROOM



SYMPHONY **SMR**
WITH MACHINE ROOM



SYMPHONY is a machine-room-less electric elevator with high ride quality and low noise emission. The system is available in a machineroomless execution or with a small machine room. Symphony is developed and produced self-directed. Being designed for a wide variety of buildings, the modular construction kit provides customized solutions for almost every use case – in single and group control.

The core components were developed and qualified considering strict quality standards according to the latest state of engineering art. Innovation, reliability and efficiency represent the leading principles here.

With the ambition to reach the perfect harmonic interaction of control system, mechanical structure and the drive train, this flexible elevator system has arisen.

Modern technology in combination with approved techniques ensure a quick installation, as well as an uncomplicated and anticipatory maintenance.

Numerous options are available to meet the individual needs of the intended purpose.

SYMPHONY MRL is a machineroomless electric rope lift. For this type of elevator, no additional machine room is needed. The gearless drive and the control unit are located in the shaft head. The control unit is usually located in the top landing next to the shaft door, in front of the door frame or integrated inside the door frame.

This space-saving design avoids disruptive roof structures and gains valuable usable space.

SYMPHONY SMR is an electric rope lift with a small machine room above the shaft. The gearless drive including the control and regulation unit is located in the machine room.

SYMPHONY MOD is a highly flexible electric rope lift. The elevator system has been specially designed for the modernization of existing elevators. The highly compact design increases the value of your building, realizing larger cabin areas with state-of-art technology. Therefor we offer different modernization packages, from complete replacement to the replacement of single assemblies.



1
KÖHLER
VITTORE & FORTI

Brief overview of ADVANTAGES

- Realization of a shaft pit of minimum 400mm independent to cabin dimensions.
- With the application of an underslung cabin, regardless of the cabin dimensions, shaft heads of minimum 2500mm and shaft pits of minimum 450mm can be realized.
- Cabin widths and cabin depths can be realized in 1 mm increments
- Minimal transfer of lateral forces into the side walls of the shaft - advantages in statics and noise transmission
- Centrally guided overslung ride unit - excellent ride comfort
- Unlimited possibilities of cabin design
- Unlimited possibilities of door executions
- Same technology up to rated speeds of 2.5 m/s
- Easy installation and commissioning
 - pre-assembled and pre-configured components
 - Plug and Play
- Integrated access control in the cabin as standard function
- Online / GSM service to support commissioning
- Integrated monitoring system as standard function
- Preventive maintenance through E-Service
- Integrated emergency call system via GSM
- Analog load measuring device as standard function ensures a smooth driving comfort
- Protection classes of IP54 are possible

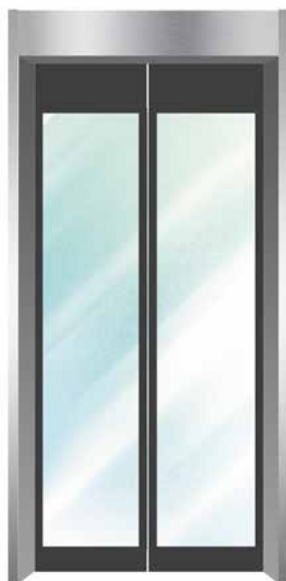
SYMPHONY **DOORS**

We deliver automatic doors in standard:

- **2PS:** Two panel side opening
- **2PC:** Two panel center opening
- **4PC:** Four panel center opening



T-100



T-200



T-300

T-100: Door panels out of powder coated steel or stainless steel brushed

T-200: Glass door panels out of laminated safety glass with full frame out of powder coated steel or stainless steel brushed

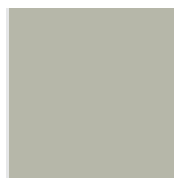
T-300: Glass door panels out of laminated safety glass with frame on top and bottom out of powder coated steel or stainless steel brushed

The door frame is made out of powder coated steel or stainless steel brushed at all executions.

STANDARD SURFACE FINISHING



Stainless steel
brushed



Powder coating
RAL7032

Following fire resistances of the shaft doors type ST-100 are available acc. to EN81-58:
EI20, EW60, EI30, EI60

Further options are available on demand.

CABIN DOOR



- modern frequency regulated synchronous drive
- noise level <50 dB
- adjustable opening and closing speed
- power consumption in standby mode 4W
- up to 360 cycles per hour
- non-contact monitoring by a high-resolution light curtain
- EN81-20/50 conform

DOOR SILLS

- Aluminum sills are supplied in standard
- Stainless steel sills can be supplied optionally



Aluminium

Stainless steel

SYMPHONY **OPERATING AND INDICATING PANELS**

BUTTONS



MT42
Dimension 34x34mm
Push plate 28x28mm
Matt stainless steel



RT42
Dimension Ø 34mm
Push plate Ø 28mm
Matt stainless steel

LANDING OPERATING PANELS



LOP-S1
LOP-S2
LOP-F1
LOP-F2



LOP-S1-LCD
LOP-S2-LCD
LOP-F1-LCD
LOP-F2-LCD

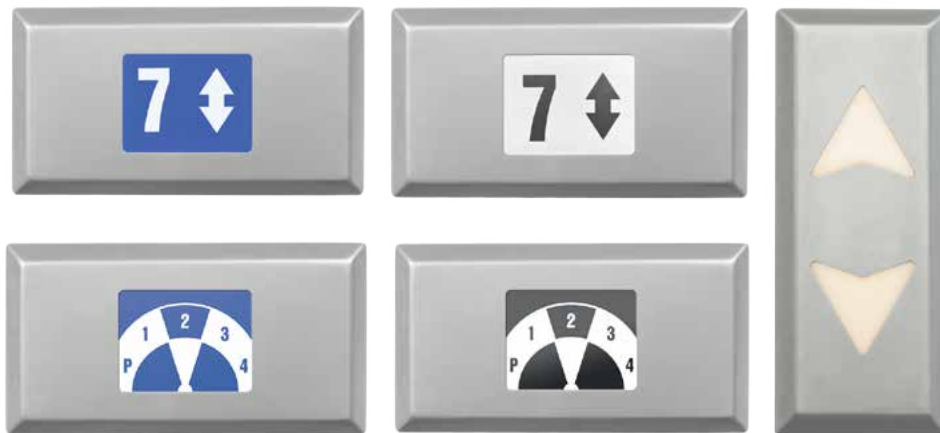


LOP-S1-LCD+
LOP-S2-LCD+
LOP-F1-LCD+
LOP-F2-LCD+

The body is made of matt stainless steel. The elements can be attached to the wall next to the shaft door or to the shaft door frame (observing the rules for required fire protection class).

Shortcut	Explanation
LOP	Landing operating panel
S1, S2	S = Surface mounted, 1 = 1 button, 2 = 2 buttons
F1, F2	F = Flat mounted, 1 = 1 button, 2 = 2 buttons
LCD	Direction indicator
LCD+	Direction and position indicator

LANDING INDICATING PANELS



LIP-S-TFT3
LIP-S-TFT5
LIP-F-TFT3
LIP-F-TFT5

LIP-S-R
LIP-F-R

Optionally, full color TFT displays can also be used in the landings. The elements can be mounted on the wall above or next to the landing door.

Shortcut	Explanation
LIP	Landing indicating panel
S	Surface mounted
F	Flat mounted
TFT3	TFT-indicator, 3 = 3 inch
TFT5	TFT-indicator, 5 = 5 inch
R	Illuminated directional arrows

CABIN OPERATING PANEL S SERIES



Our newly developed exclusive cabin operating panel of the **S series** is equipped with a full color TFT display and allows a flexible positioning inside the cabin by surface mounting.

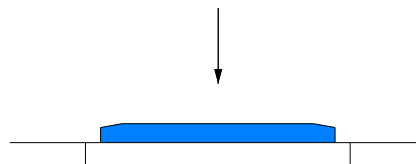
It provides the highest visual overview to the passengers. The height is 1270mm.

The **standard version** includes:

- buttons braille and tactile
- integrated access control via Dallas Key - Reader
- door-close and door-open-button
- intercom
- call cancelation function in the cabin
- type plate
- 5" TFT display
- brushed stainless steel body
- emergency button

The **available options** are:

- VIP key switch
- body made of other materials (e.g. stainless steel linen or powder-coated steel)
- body with LED - Backlight
- preparation for code card reader
- 9" TFT display
- text announcement



COP-S-TFT5
COP-S-TFT9

CABIN OPERATING PANEL F SERIES



Our elegant fully integrated cabin control panel of the **F series** is equipped with a full color TFT display and fits through the integrated mounting optimally in the cabin wall.

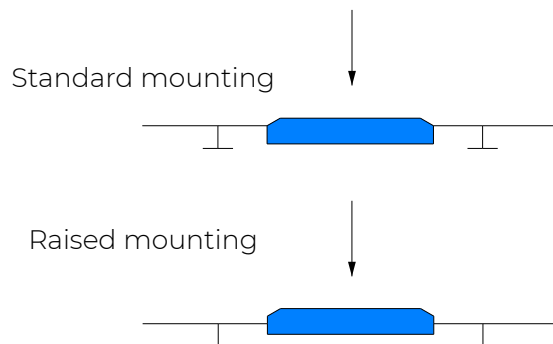
The panels of the F series are individually adapted to the cabin height.

The **standard version** includes:

- buttons braille and tactile
- integrated access control via Dallas Key - Reader
- door-close and door-open-button
- intercom
- call cancelation function in the cabin
- type plate
- 5" TFT display
- brushed stainless steel body
- emergency button
- Slightly raised with bevelled edges

The **available options** are:

- VIP key switch
- body made of other materials (e.g. stainless steel linen or powder-coated steel)
- preparation for code card reader
- 9" TFT display
- text announcement
- fully flush mounting



COP-F-TFT5
COP-F-TFT9



SYMPHONY **CABINS**

ELEGANCE

STAINLESS STEEL



CLASSIC

POWDER COATING



AMBIENTE

GLASS



PANORAMA

SPECIAL CABINS



SYMPHONY CABINS

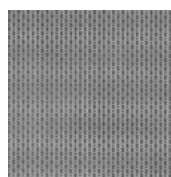
ELEGANCE STAINLESS STEEL



BRUSHED



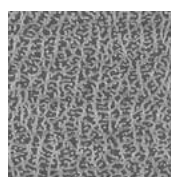
BRONCE
BRUSHED



LINEN



GOLD
BRUSHED



LEATHER



BRONCE
POLISHED



POLISHED



GOLD POLISHED

Standard scope of supply

Walls: Stiff car panel construction in brushed stainless steel.

Other stainless steel designs are available according to our «Stainless Steel Design Collection».

Ceiling: Traversable, suspended ceiling made of brushed stainless steel with matt-white acrylic glass and fluorescent tubes or optionally with LED lighting. Other versions are available acc. to «accessories ceilings».

Flooring: Linoleum. Further variants are available acc. to «Accessories floor coverings».

Skirting: brushed stainless steel.

Car entrance panels: brushed stainless steel.

Mirror: safety glass with polishes edges, ½ height on back wall.

Car operating panel: integrated column panel of the **F Series** or surface mounted panel of the **S Series**.

CLASSIC

POWDER COATED



Standard scope of supply

Walls: Stiff car panel construction out of powder coated steel according to our «RAL Colors Collection».

Ceiling: Traversable, suspended ceiling made of powder coated steel (RAL 9010) with matt-white acrylic glass and fluorescent tubes or optionally with LED lighting. Other versions are available acc. to «accessories ceilings».

Flooring: Linoleum. Further variants are available acc. to «Accessories floor coverings».

Skirting: powder coated steel.

Car entrance panels: powder coated steel.

Mirror: safety glass with polished edges, ½ height on back wall.

Car operating panel: integrated column panel of the **F Series** or surface mounted panel of the **S Series**.

AMBIENTE GLASS



	
PURE WHITE RAL9010	RED RAL1586
	
IVORY RAL1014	LIGHT BROWN RAL1236
	
WHITE ALUMINIUM RAL9006	RED ORANGE RAL2001
	
METAL BLUE RAL1435	LUM GREEN RAL1164

Standard scope of supply

Walls: Stiff car panel construction out of zinc-coated steel clad with glass panels acc. to our «Glass Panel Collection».

Ceiling: Traversable, suspended ceiling made of brushed stainless steel with matt-white acrylic glass and fluorescent tubes or optionally with LED lighting. Other versions are available acc. to «accessories ceilings».

Flooring: Linoleum. Further variants are available acc. to «Accessories floor coverings».

Skirting: brushed stainless steel.

Car entrance panels: brushed stainless steel.

Mirror: safety glass with polished edges, ½ height on back wall.

Car operating panel: integrated column panel of the **F Series** or surface mounted panel of the **S Series**.

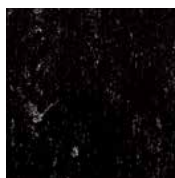
PANORAMA
SPECIAL CABINS

Individual design
Various geometric shapes
Unlimited design possibilities
Framed and frameless execution
Exclusive materials



ACCESSORIES FLOORING

LINOLEUM



BLACK



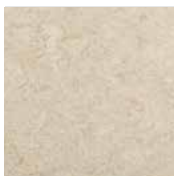
QUARTZ GREY



DARK GREY



GREEN



KRON



BROWN

MARBLE



KF05



KF33



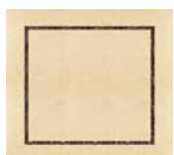
KF34



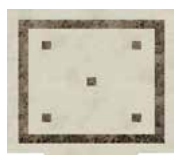
KF35



KF1601



KF1603



KF1604



KF1605



KF1606



KF1607



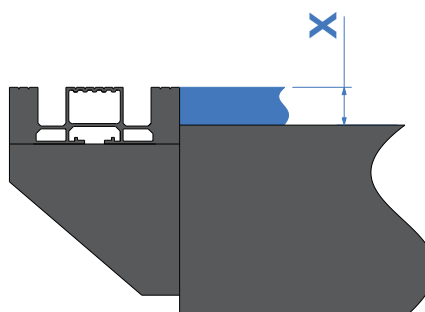
KF1609



KF1610

Lowering for on-site flooring

For an on-site floor covering (e.g. tiles)
a floor lowering X of 10 - 40mm can be
provided.



ACCESSORIES

HANDRAILS



KHL-9707
Straight pipe out of natural
stainless steel



KHL-9014
Curved pipe out of
natural stainless steel

ACCESSORIES

CEILING



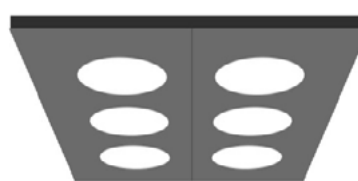
ZD-01



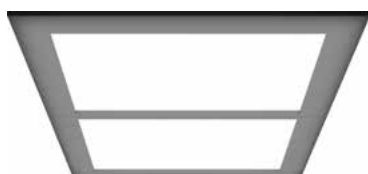
ZD-05



ZD-02



ZD-06



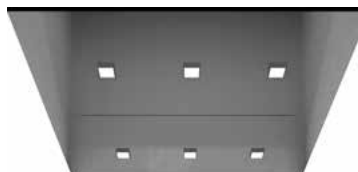
ZD-03




ZD-07



ZD-04



ZD-08



KÖHLER Elevator GmbH is your luxury elevator provider for your luxurious and extravagant building. We adapt our products individually to your creative space. From handmade wood carvings and finest leatherworking to the finest natural stone floors - our diverse design options know no limits....

ELEVATOR CONTROL SYSTEM NELA

NELA represents a next-generation control system designed for both traction and hydraulic lifts. This system offers state-of-the-art technology along with emphasis on maximum operational reliability.



SYSTEM FEATURES

Standards	EN 81-1, EN 81-20/50, GOST RU
Application	new installations / modernization
Installation of control unit	machine room / landing / integrated in door panel / shaft
Human interface	<ul style="list-style-type: none"> - parametrization panel with LCD display inside the control unit - remote control by laptop, tablet or smartphone
Processor	micro-processor
Type of lifts	regulated and unregulated rope and hydraulic lifts
Rated speed	maximum 4 m/s
Number of stops	maximum 60
Group control	maximum 6 lifts
Positioning system	magnetic incremental / absolute
Protection class	IP20 / IP54 as option
Integrated special options	<ul style="list-style-type: none"> - access control in the cabin - monitoring system via GSM or internet - emergency call system via GSM - E-Service for maintenance

CONTROL FUNCTIONS

STANDARD FUNCTIONS

Ref. Nr.	Description
CF-01	Directional dependent collective control
CF-02	Full collective control
CF-03	Priority control via dallas reader
CF-04	Access control via dallas reader
CF-05	Call cancellation in the cabin
CF-06	Intercom system between car, control and shaft pit (EN81-20/50)
CF-07	Standby mode cabin light, control system and inverter
CF-08	analog load measurung device
CF-09	Prevention of abuse of commands in the cabin
CF-10	emergency horn
CF-11	Emergency call system GSM
CF-12	Emergency light in the cabin, car roof and control box (EN81-20/50)
CF-13	Parking function in a defined stop
CF-14	Door-open and door-close button
CF-15	Non-contact monitoring by a high-resolution light curtain
CF-16	Online monitoring system
CF-17	E-Service for mainnenance
CF-18	Bypass function at full cabin

OPTIONAL FUNCTIONS

Ref. Nr.	Description
CF-19	Group control duplex
CF-20	Group control triplex
CF-21	Group control quadroplex
CF-22	Arrival gong
CF-23	Text announcement in the cabin
CF-24	Automatic static evacuation in case of fire (detectors provided by customer)
CF-25	Automatic dynamic evacuation in case of fire (detectors provided by customer)
CF-26	Automatic rescue in case of power failure (by on-site generator)
CF-27	Automatic rescue device in case of power failure load dependent to the next landing
CF-28	Automatic rescue device in case of power failure load independent to a defined landing
CF-29	Preparation for a customer-side card reader
CF-30	Re-levelling of the cabin
CF-31	Pre-opening of door
CF-32	Preparation for a customer BMS (Building Management System)
CF-33	Priority control via key switch
CF-34	Acoustic signal on button acivation in the cabin
CF-35	Acoustic signal on button activation in the landing
CF-36	Release of the buttons in the cabin by means of a key switch
CF-37	Penthouse control
CF-38	Preparation for a customer video camera in the cabin
CF-39	video camera in the cabin
CF-40	Advertising and information display in the cabin
CF-41	Shaft lighting
CF-42	Energy recovery through inverter



SYMPHONY **CONTROL SYSTEM**

ADVANTAGES OF NELA

MODERN AND PROVEN COMPONENTS - HIGH QUALITY GUARANTEE

At the selection of our control components, we attach great importance to safety and durability. Only this way can we achieve a long-term satisfaction of our customers.



INTEGRATED ACCESS CONTROL IN THE CABIN - STANDARD FEATURE

Every elevator of KÖHLER Elevator is equipped with an access control system in the cabin. This allows to define individual access rights. In Standard, a dallas reader is used here.

INTEGRATED MONITORING SYSTEM – STANDARD FEATURE

Every elevator of KÖHLER Elevator is equipped with an online monitoring system. With the Lift Online Monitor, the elevator operator can monitor his elevators via the internet.



PREVENTIVE MAINTENANCE BY E-SERVICE

Maintenance companies receive a tool for remote maintenance. This system provides various evaluations and usage statistics of the elevator. In addition, a factory online support can be provided. Commissioning or maintenance are provided.

ADVANTAGES OF NELA

CONTACTORLESS TECHNOLOGY - SILENT OPERATION

By means of contactorless technology, the noisy operation of the motor contactors is avoided.

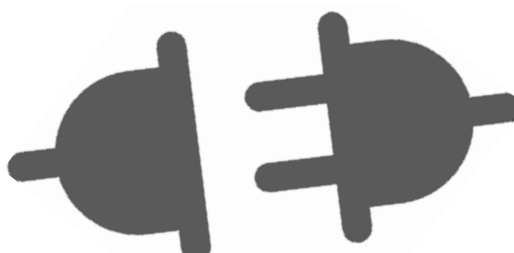


EASY COMMISSIONING – FACTORY PRE-CONFIGURATION

Each control is preconfigured and pre-parameterized order wise. Additional functions such as autotuning of the drive and automatic shaft learning accelerate the commissioning process.

EASY INSTALLATION - PLUG AND PLAY

The single components of the controller are largely pre-wired, pre-assembled and connected to each other by plugs.



HIGH ENERGY EFFICIENCY - ENERGY EFFICIENCY CLASS A ACC. TO VDI 4707 POSSIBLE

For high energy efficiency we use gearless, frequency controlled permanent magnet drives. In standby mode during rest periods, the energy consumption of the system is reduced to a minimum.

INTEGRATED REMOTE TELEPHONE SYSTEM WITH GSM

According to EN81-28, every lift is equipped with an emergency call device. Even in the event of a power failure, it will be supplied by the control's own emergency power supply. This device is also used as a communication medium for the online monitoring system and E-SERVICES.



SYMPHONY LAYOUT

PERFORMANCE MATRIX machineroomless

SYMPHONY MRL EN81-20/50																			
Rated load Q up to	kg	450			630				1000				1600				2000		
Suspension		2:1			2:1				2:1				2:1				2:1		
Rated speed v_N	m/s	1.0	1.6	1.75	1.0	1.6	1.75	2.0	1.0	1.6	1.75	2.0	1.0	1.6	1.75	2.0	1.0	1.6	1.75
Travel height TH max.	m	40	60	60	40	60	60	80	40	60	60	80	40	80	80	80	40	80	80
Open through OT optional																			
SHAFT DIMENSIONS																			
Shaft width SW min.	mm	KB + 500			KB + 500				KB + 500				KB + 550				KB + 600		
Shaft width SW max.	mm	KB + 1100			KB + 1100				KB + 1100				KB + 1200				KB + 1300		
Shaft depth SD min.	mm	KT + TP + 80			KT + TP + 80				KT + TP + 80				KT + TP + 80				KT + TP + 80		
SD at OT	mm	KT + 2x TP			KT + 2x TP				KT + 2x TP				KT + 2x TP				KT + 2x TP		
Shaft pit SP	mm	1100	1200	1300	1100	1200	1300	1400	1100	1200	1300	1400	1100	1200	1300	1400	1200	1300	1400
SP min.	mm	400	-		400	-			400	-			500	-			-		
Shaft head SH min.	mm	KH + 1200	KH + 1400	KH + 1500	KH + 1200	KH + 1400	KH + 1500	KH + 1850	KH + 1200	KH + 1400	KH + 1500	KH + 1850	KH + 1300	KH + 1500	KH + 1600	KH + 1950	KH + 1400	KH + 1600	KH + 1750
SH reduced min.	mm	KH + 500	-		KH + 500	-			KH + 500	-			-			-			
DOORS																			
Door width DW	mm	600 - 800			700 - 900				700 - 1200				900 - 1300				900 - 2000		
Door height DH	mm	2000 - 2500			2000 - 2500				2000 - 2500				2000 - 2500				2000 - 2500		
Door type	mm	2PS/4PC			2PS/2PC/4PC				2PS/2PC/4PC				2PS/2PC/4PC				2PS/2PC/4PC		
Door package DP (frame on landing)	mm	275/275			275/205/275				275/205/275				275/205/275				275/205/275		
Door package DP (frame in shaft)		300/300			300/230/300				300/230/300				300/230/300				300/230/300		
CABIN DIMENSIONS																			
Cabin width CW	mm	900 - 1100			900 - 1500				1000 - 2100				1200 - 2100				1400 - 2100		
Cabin depth CD	mm	1100 - 1400			1100 - 1800				1100 - 2200				1400 - 2500				1600 - 2700		
Cabin height CH rough	mm	2100 - 2700			2100 - 2700				2100 - 2700				2100 - 2700				2100 - 2700		
Standard dimensions CW x CD x CH	mm	1000 x 1250 x 2200			1100 x 1400 x 2200				1100 x 2100 x 2200 1600 x 1400 x 2200				1400 x 2400 x 2200 1600 x 2100 x 2200				1500 x 2700 x 2300 1750 x 2300 x 2200		

This table intends to give an orientation. A lot of different executions are possible on demand.

PERFORMANCE MATRIX

machine room above

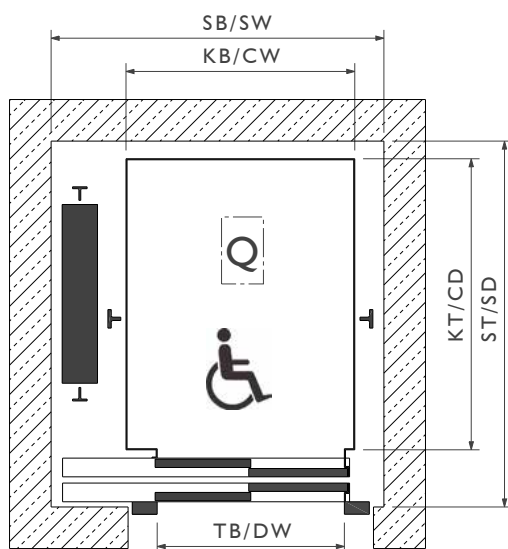
SYMPHONY SMR EN81-20/50																			
Rated load Q up to	kg	630					1000					1600					2000		
Suspension		2:1					2:1					2:1					2:1		
Rated speed v_N	m/s	1.0	1.6	1.75	2.0	2.5	1.0	1.6	1.75	2.0	2.5	1.0	1.6	1.75	2.0	2.5	1.0	1.6	1.75
Travel height TH max.	m	40	60	60	80	100	40	60	60	80	100	40	80	80	80	100	40	80	80
Open through OT																			
SHAFT DIMENSIONS																			
Shaft width SW min.	mm	KB + 500					KB + 500					KB + 550					KB + 600		
Shaft width SW max.	mm	KB + 1100					KB + 1100					KB + 1200					KB + 1300		
Shaft depth SD min.	mm	KT + TP + 80					KT + TP + 80					KT + TP + 80					KT + TP + 80		
SD at OT	mm	KT + 2x TP					KT + 2x TP					KT + 2x TP					KT + 2x TP		
Shaft pit SP	mm	1100	1200	1300	1400	1750	1100	1200	1300	1400	1750	1100	1200	1300	1400	1750	1200	1300	1400
SP min.	mm	400	-				400	-				500	-				-		
Shaft head SH min.	mm	KH + 1200	KH + 1400	KH + 1500	KH + 1650	KH + 1900	KH + 1200	KH + 1400	KH + 1650	KH + 1900	KH + 2100	KH + 1200	KH + 1400	KH + 1500	KH + 1650	KH + 1900	KH + 1200	KH + 1400	KH + 1500
SH reduced min.	mm	KH + 500	-				KH + 500	-				-				-			
Height machine room MRH min.	mm	2000																	
DOORS																			
Door width DW	mm	700 - 900					700 - 1200					900 - 1300					900 - 2000		
Door height DH	mm	2000 - 2500					2000 - 2500					2000 - 2500					2000 - 2500		
Door type	mm	2PS/2PC/4PC					2PS/2PC/4PC					2PS/2PC/4PC					2PS/2PC/4PC		
Door package DP (frame on landing)	mm	275/205/275					275/205/275					275/205/275					275/205/275		
Door package DP (frame in shaft)		300/230/300					300/230/300					300/230/300					300/230/300		
CABIN DIMENSIONS																			
Cabin width CW	mm	900 - 1500					1000 - 2100					1200 - 2100					1400 - 2100		
Cabin depth CD	mm	1100 - 1800					1100 - 2200					1400 - 2500					1600 - 2700		
Cabin height CH rough	mm	2100 - 2700					2100 - 2700					2100 - 2700					2100 - 2700		
Standard dimensions CW x CD x CH	mm	1100 x 1400 x 2200					1100 x 2100 x 2200 1600 x 1400 x 2200					1400 x 2400 x 2200 1600 x 2100 x 2200					1500 x 2700 x 2300 1750 x 2300 x 2200		

This table intends to give an orientation. A lot of different executions are possible on demand.

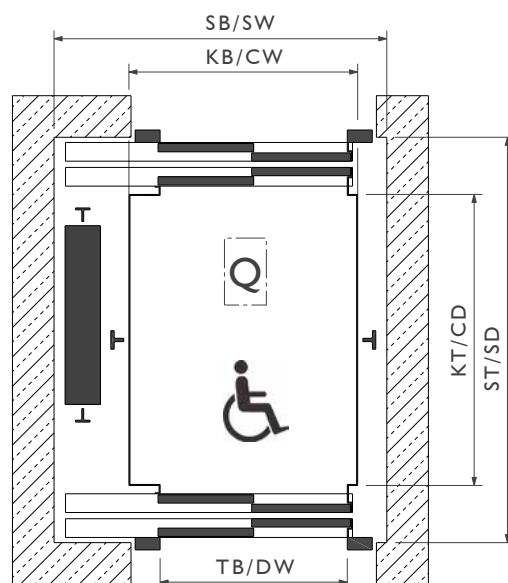
SYMPHONY **LAYOUT**

CROSS SECTIONS

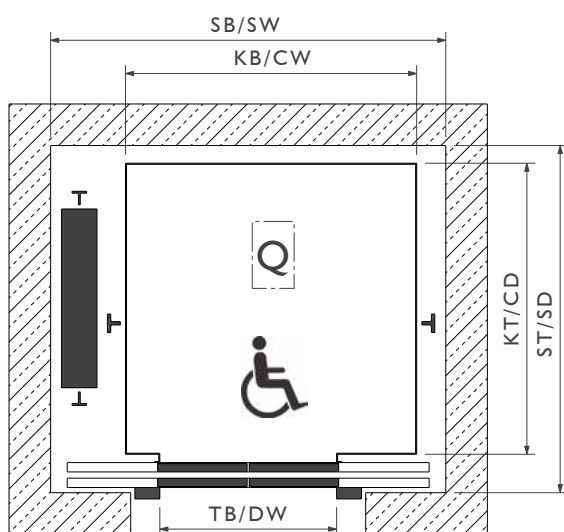
**2PS – 2 panel side opening
single entrance – 1 entrance**



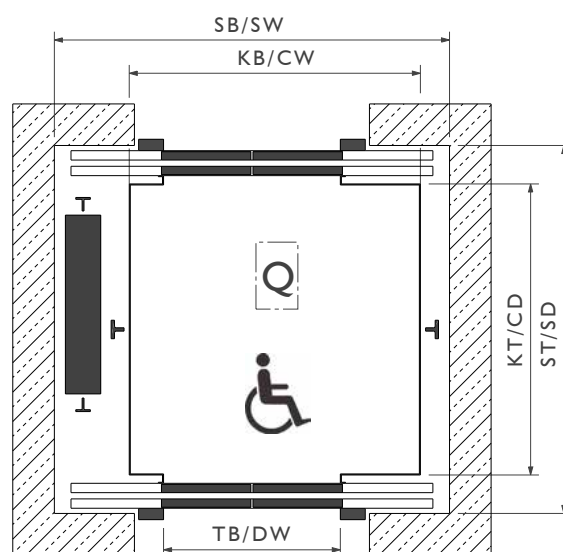
**2PS – 2 panel side opening
open through – 2 entrances**



**2PC – 2 panel central opening
single entrance – 1 entrance**

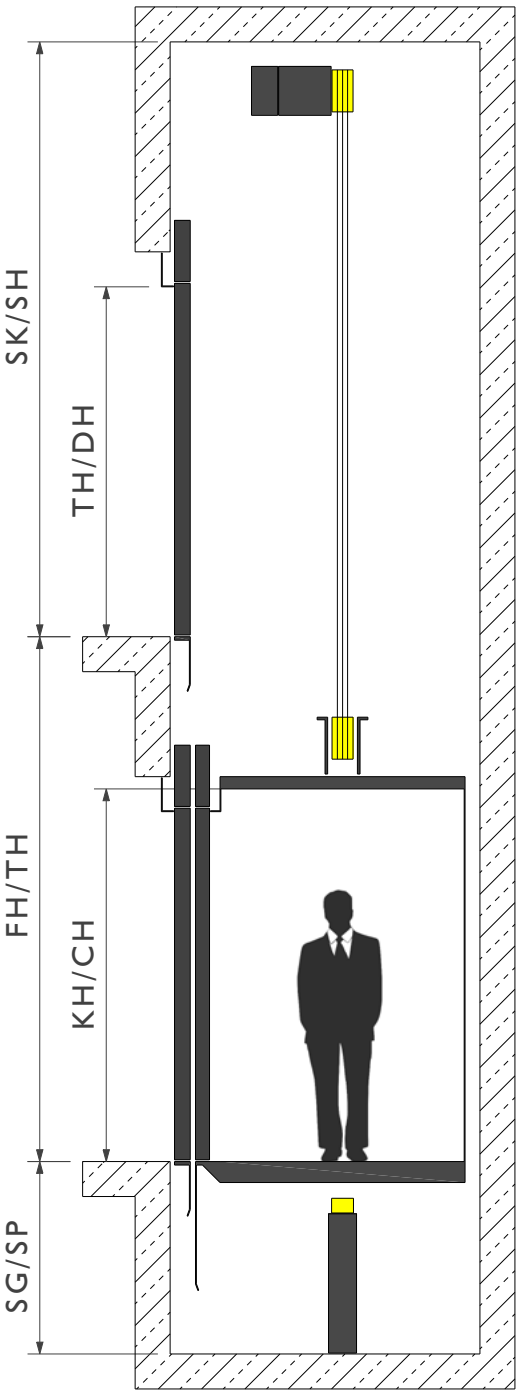


**2PC – 2 panel central opening
open through – 2 entrances**

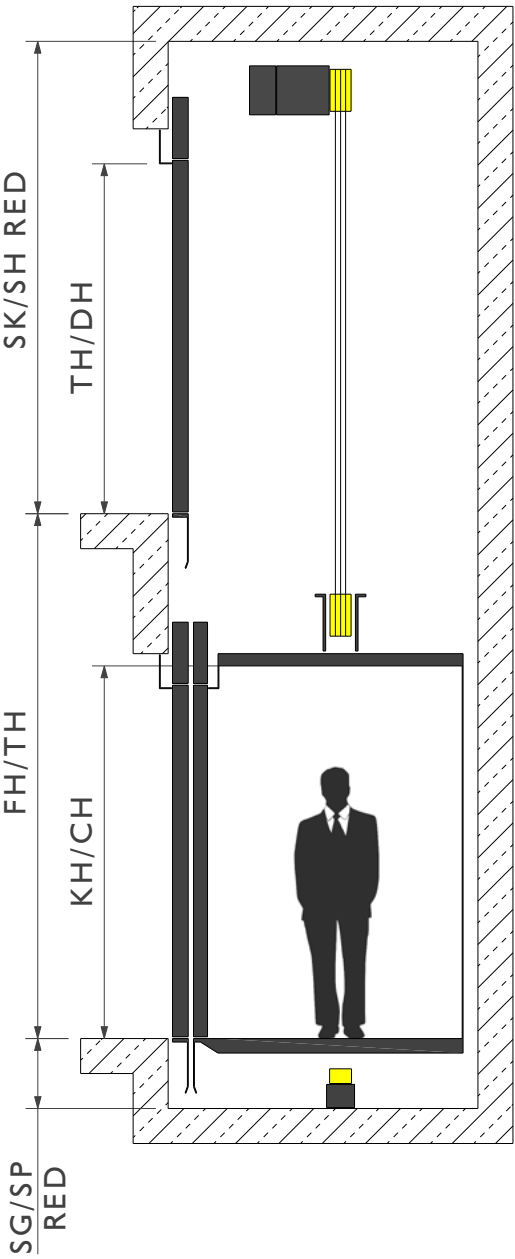


VERTICAL SECTIONS MRL

**STANDARD SHAFT HEAD
STANDARD SHAFT PIT**

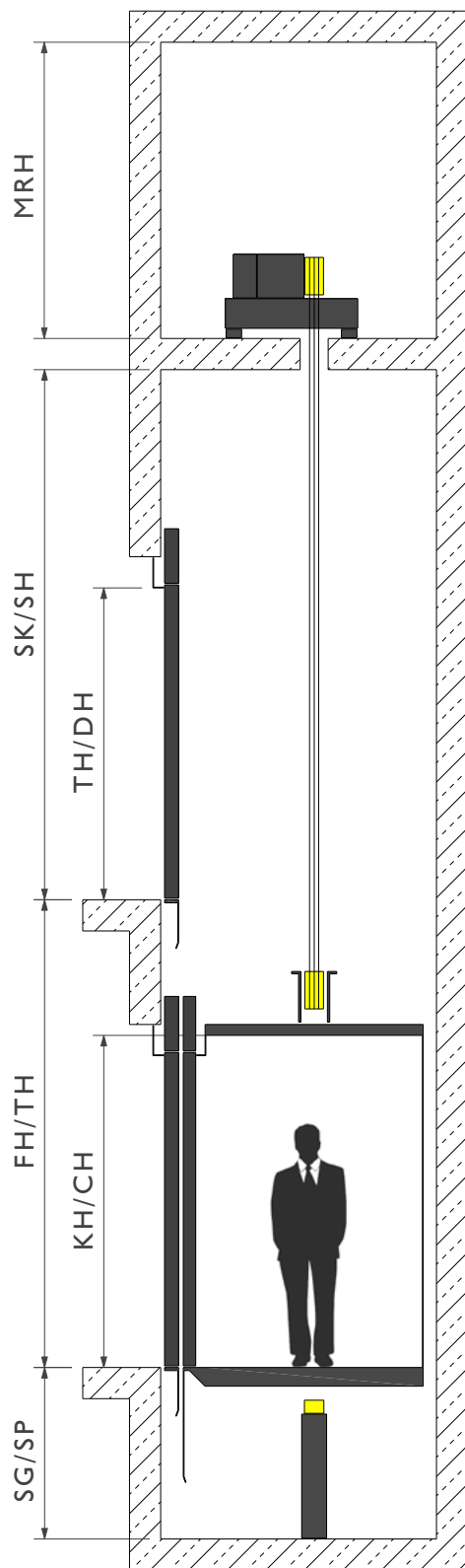


**REDUCED SHAFT HEAD
REDUCED SHAFT PIT**

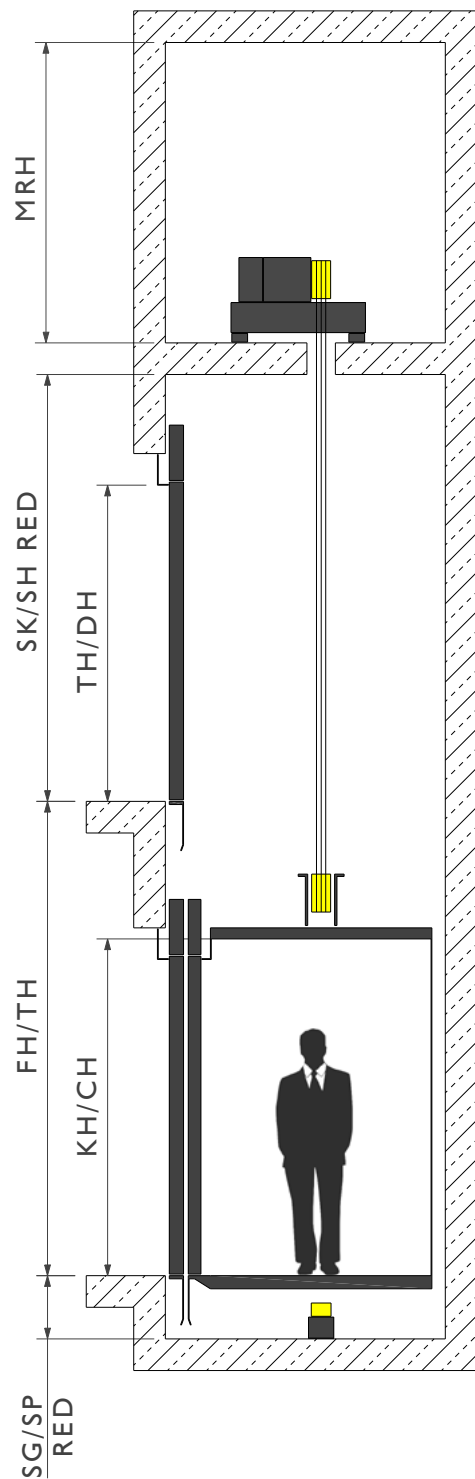


VERTICAL SECTIONS SMR

**STANDARD SHAFT HEAD
STANDARD SHAFT PIT**



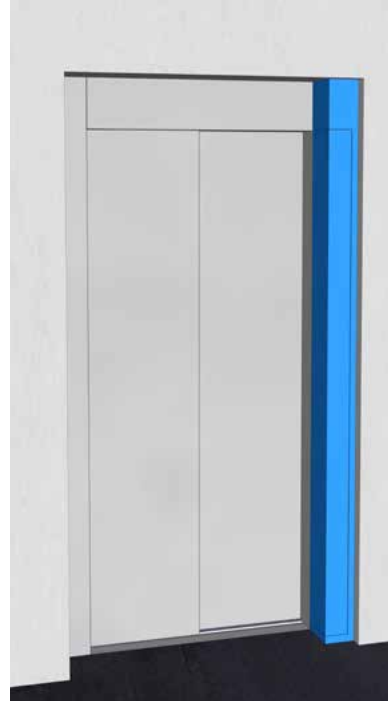
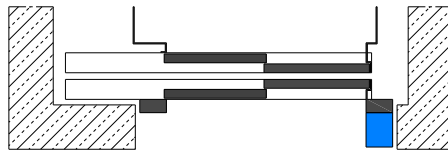
**REDUCED SHAFT HEAD
REDUCED SHAFT PIT**



CONTROL CABINET MRL

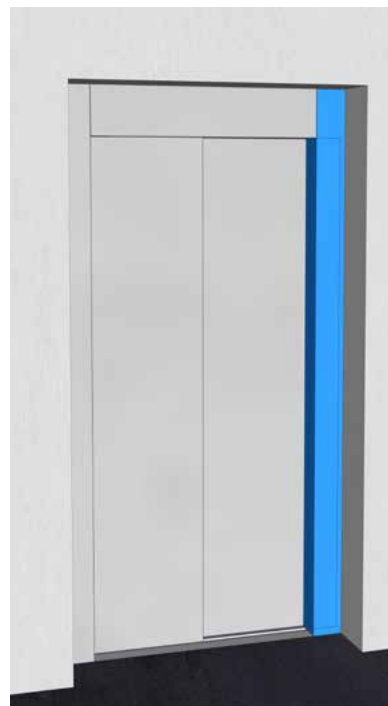
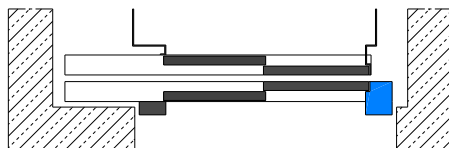
COMPACT IN FRONT OF THE DOOR FRAME

- separate slim control cabinet in front of the door frame
- compact arrangement
- doors with fire protection applicable
- for central and side opening doors



COMPACT INSIDE THE DOOR FRAME

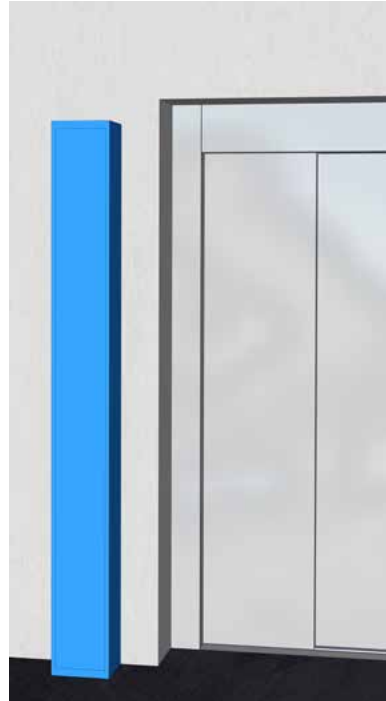
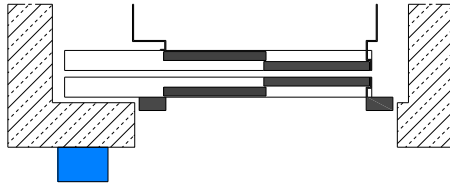
- control cabinet integrated into the door frame
- most compact arrangement
- doors with fire protection not applicable
- side opening doors only

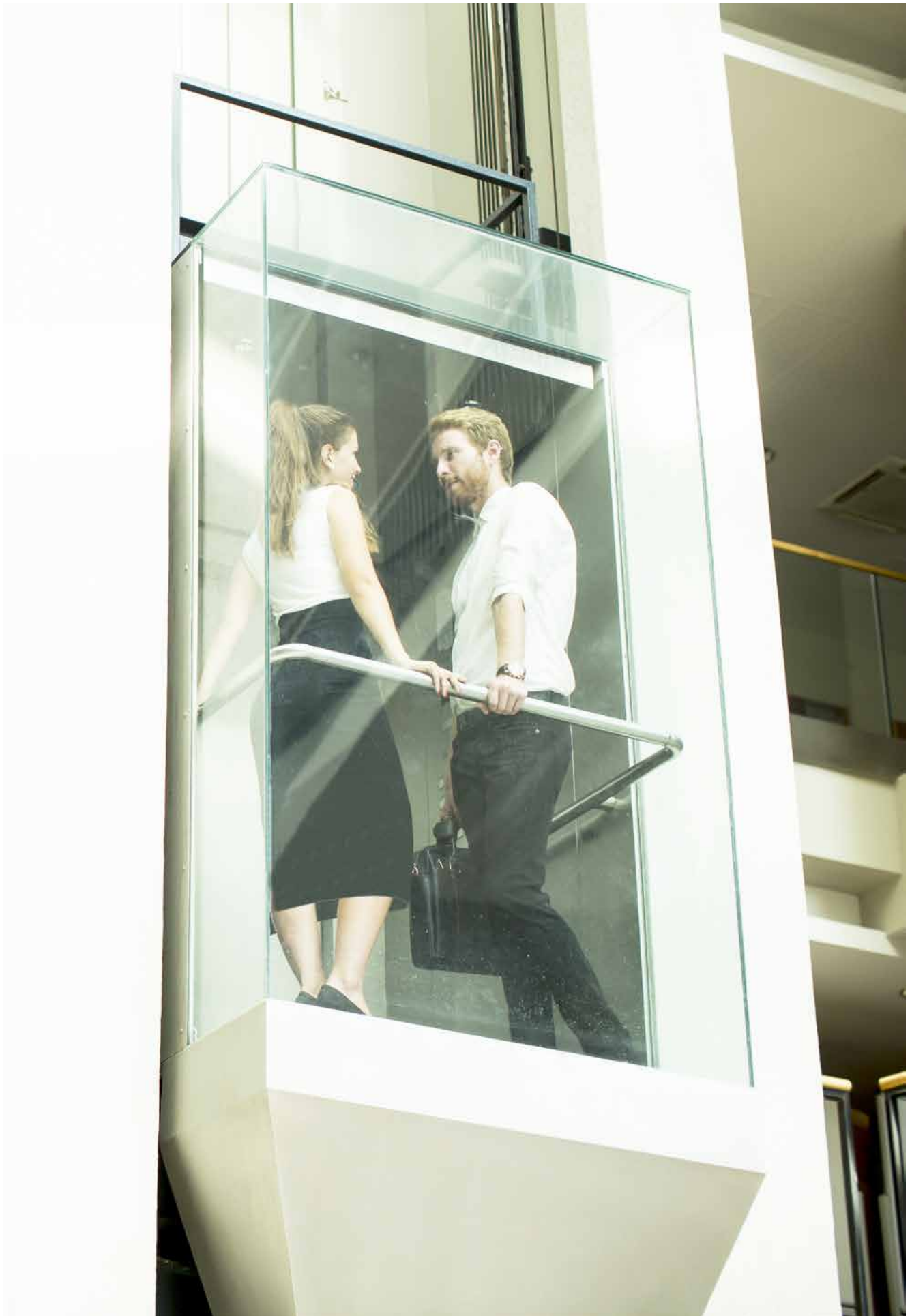


CONTROL CABINET MRL

SEPARATE CONTROL CABINET

- separate flexibly positionable control cabinet
- most maintenance friendly
- doors with fire protection applicable
- independent to door execution







KÖHLER Elevator GmbH
Benzstrasse 5
72793 Pfullingen
Deutschland

Tel./Fax.: +49 (0) 7121 7068 077
Email: contact@koehlerelevator.de
Website: www.koehlerelevator.de